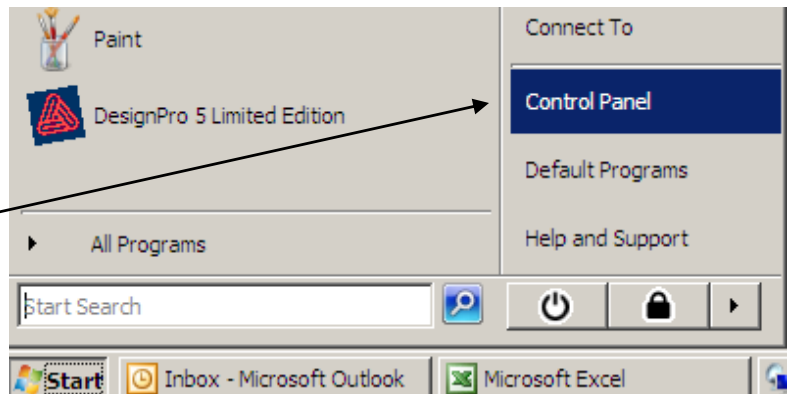


Testing your Cyber Acoustics Headset

Before we get started, you need to make sure that your operating system is the new Windows Vista.

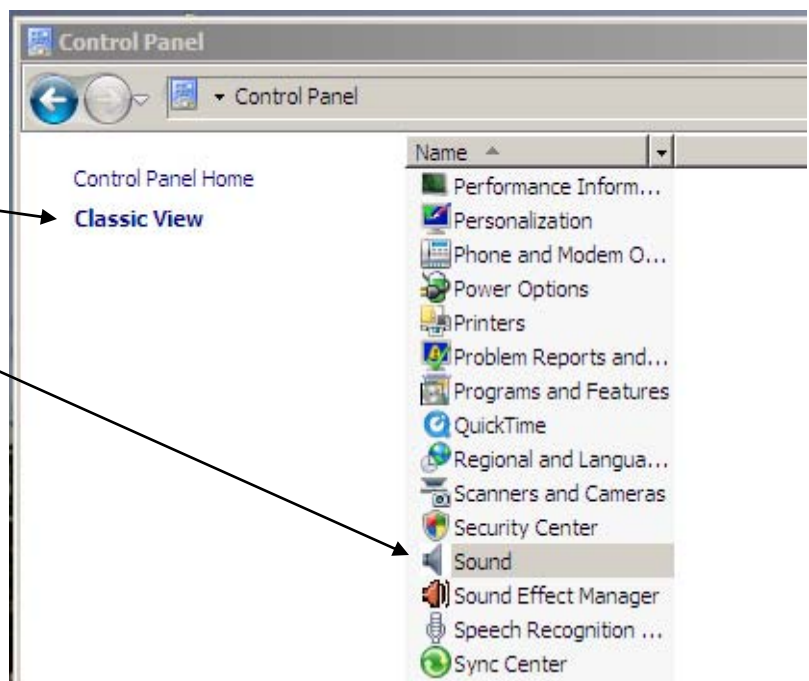
STEP 1

- 1) To Get Started make sure all audio files are closed.
- 2) Click the "Start" button.
- 3) Click the "Control Panel"



STEP 2

- 1) From the "Control Panel" make sure you have click on the "Classic View"
- 2) From the list you click on the "Sound" icon.



STEP 3

1) Once you have click on the "Sound Icon" the Sound window will appear.

2) From there you need to select the Recording tab.

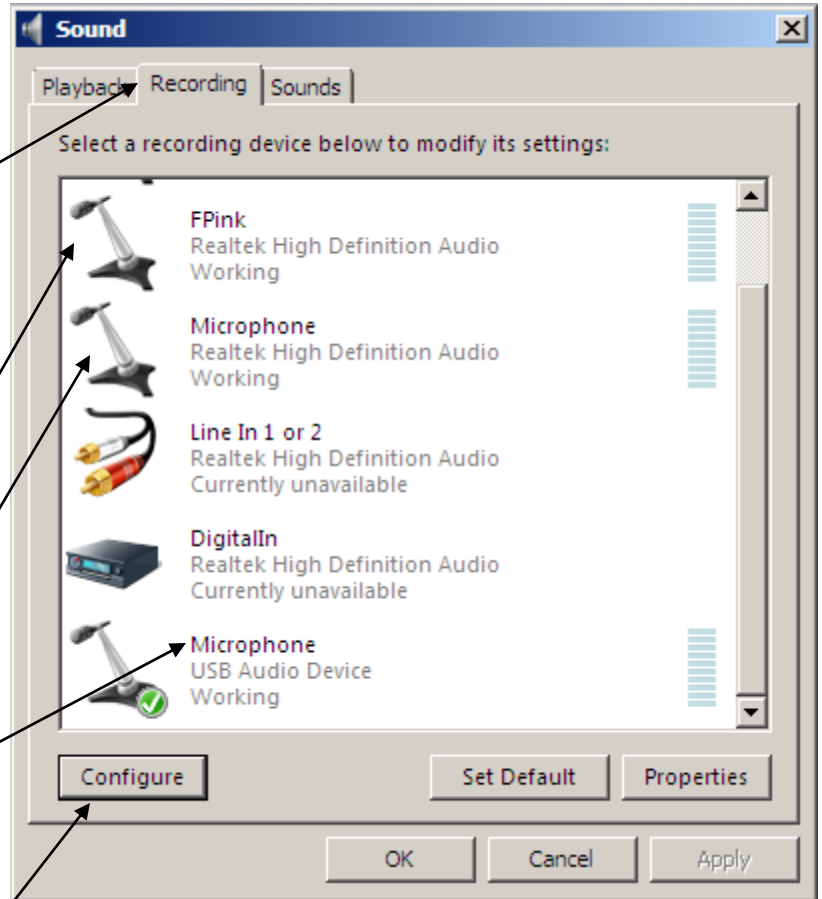
3) Scroll down the window until you see the option "Microphone USB Audio Device?"

4) Most computers will give you 3 options. If you have a Pink plug in device the selection depends on where you have the device plugged in.

If you have it in the front, right click on FPink for front pink outlet.

If you have it in the rear, right click on Microphone.

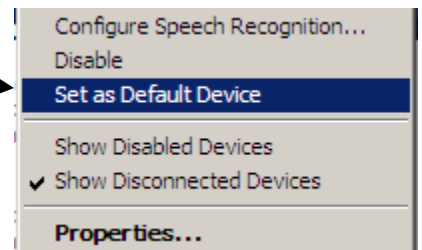
If you are using a USB device. right click USB.

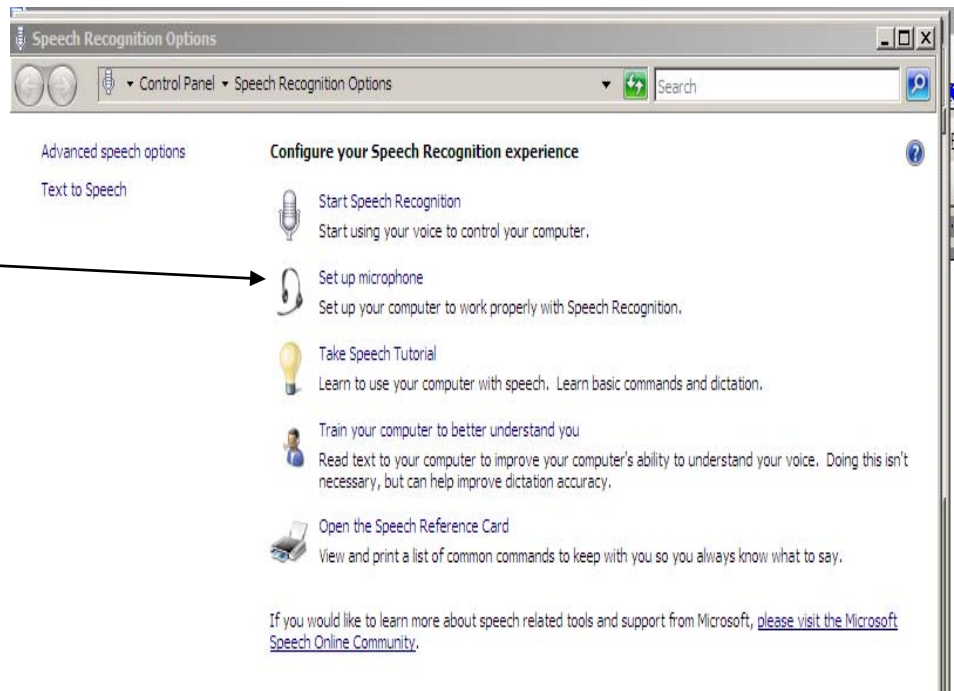


STEP 4

1) From there you will see an option to set your as your "Default Device" Click it to set the default.

2) After you have set your Default, click on the Configure Button.





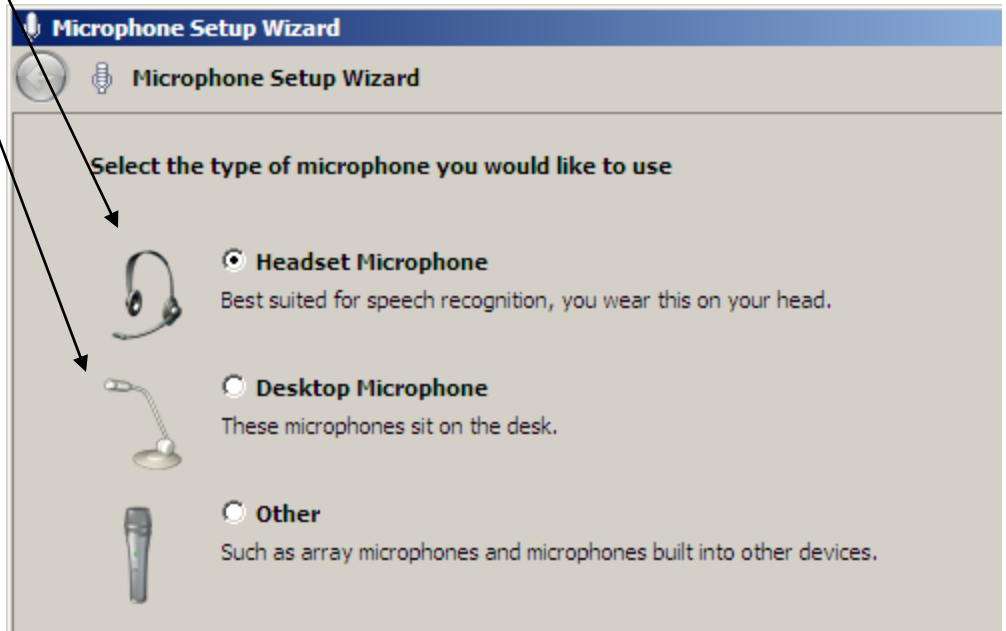
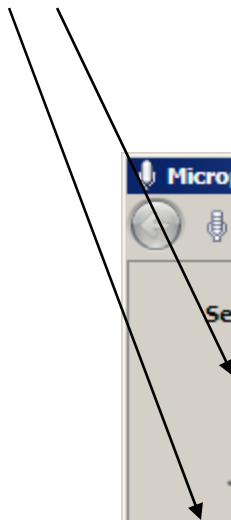
STEP 6

1) From this Window we want to click on "Set up Microphone"



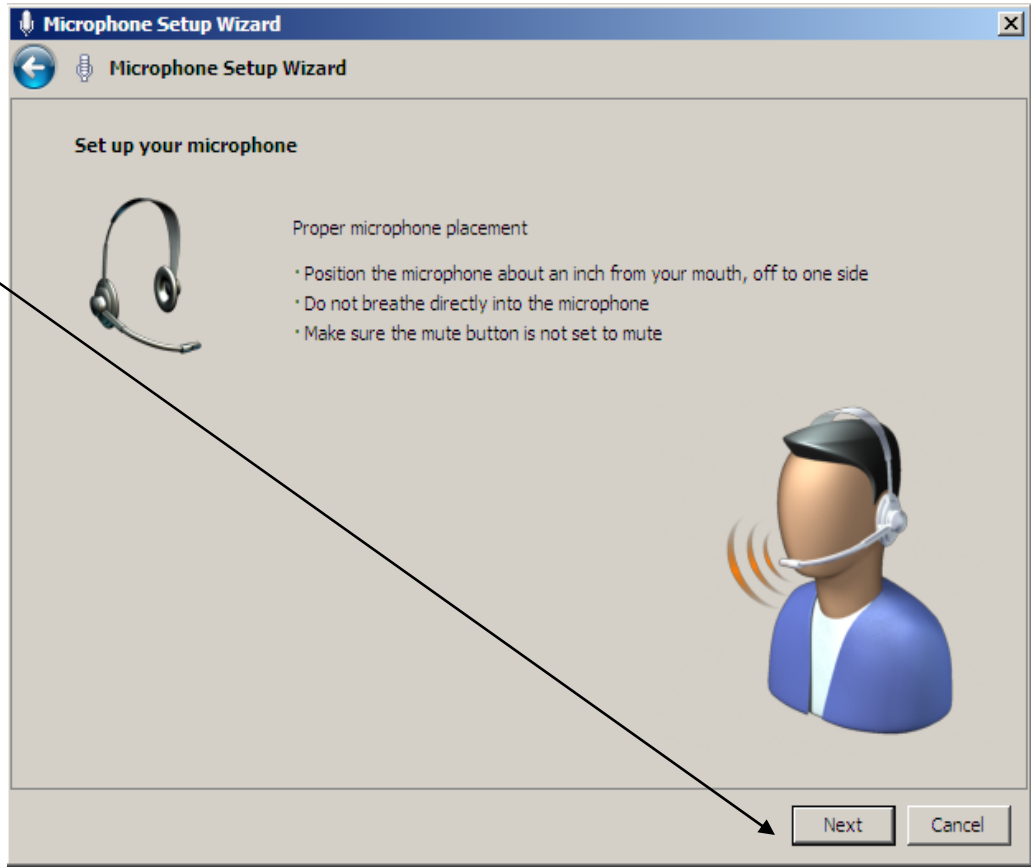
Step 7

1) From the "Microphone Setup Wizard" Select either Headset Microphone or Desktop Microphone and click "Next"



STEP 8

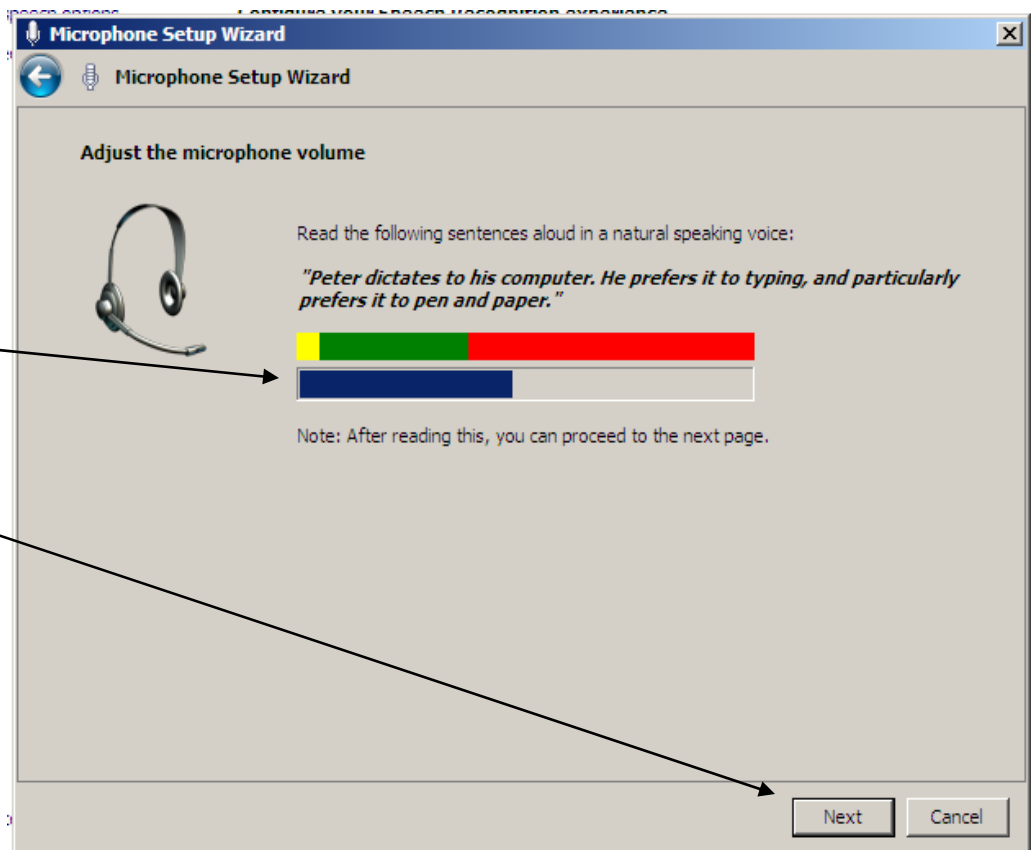
1) Check your placement and then select "Next"



STEP 9

1) Speak into the Microphone and you should see the Blue Bar move to the right.

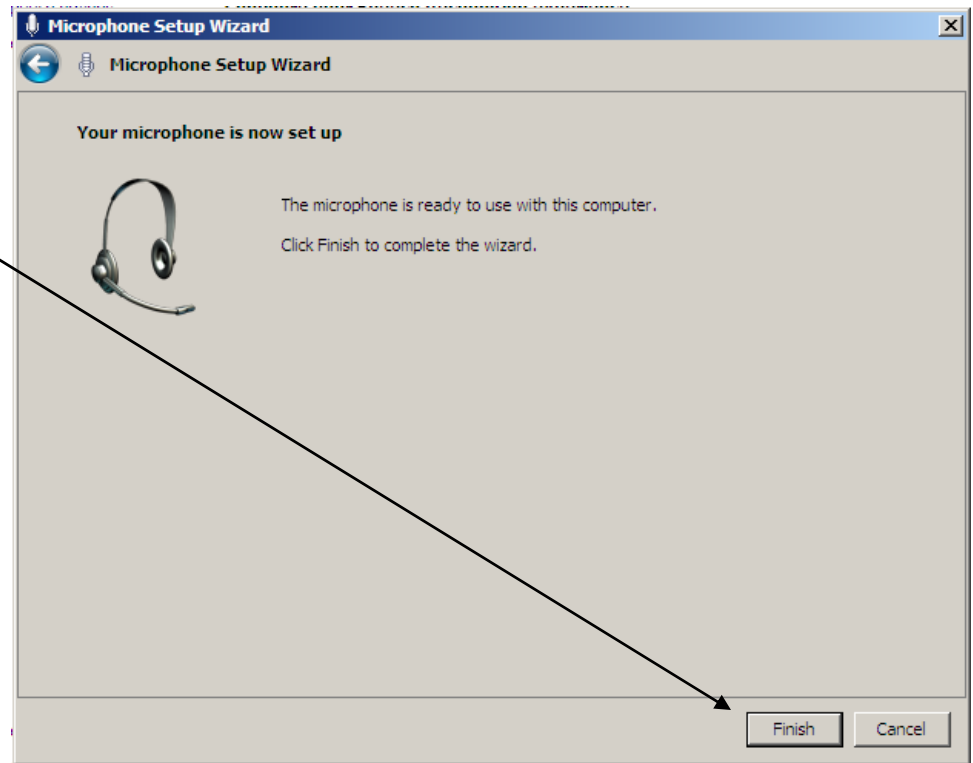
2) If you see the blue bar move, click "Next"
If the blue bar does not move check problem solutions on the next page.



STEP 10

1) You are at the end of the wizard and you should see this window. Click "Finish"

2) Close all Windows, you are now set up to use your Headset



Possible Solutions to Microphones Problems..

- 1) Check to make sure the "Mute Button " is in the "ON" position
- 2) Verify that the Blue light is on/flickering
- 3) Possibly too many USB devices connected can draw too much power for the headset to work. Disconnect other USB devices to see if this is the problem. If so, you should purchase a USB powered hub.